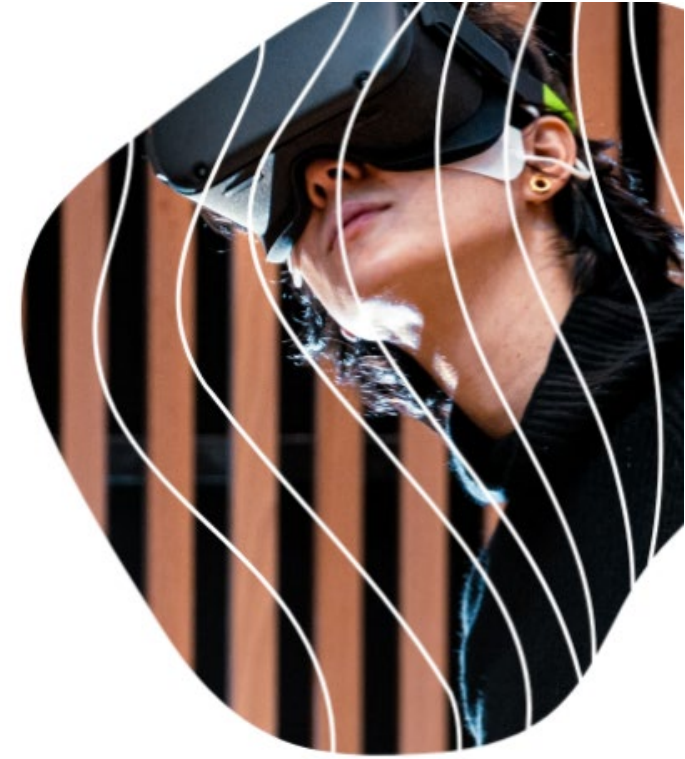




learningplanetinstitute.org/en/

Appointment of Global Lead - Philanthropy & Planetary Stewardship

October 2023 | Ref: EBKDA



Saxton Bampfylde





[Empowering the next generations...](#)

[co-constructing open learning with youth.](#)



[Click here to play
video.](#)

François Taddei,
Co-Founder of the Learning Planet Institute.



Contents

- 4 About the Learning Planet Institute; Beliefs, Missions, and Actions
- 7 Learning Planetizen Manifesto
- 8 Sustainable Campus
- 9 Learning Planet Institute's Radically Collaborative Approach
- 10 The Learning Planet Institute : Now
- 13 The Learning Planet Institute : The Future
- 15 The Role
- 16 Essential Functions
- 17 The Person
- 18 Terms of Appointment
- 19 How to Apply



About the Learning Planet Institute; Beliefs, Missions and Actions

Since 2006, the Learning Planet Institute has been dedicated to reinventing lifelong learning for all ages through collective intelligence. Our aim is to build sustainable and inclusive learning societies able to rise to the complex challenges we face.

The Institute's mission is to explore, research and share new ways of learning and cooperating so we can respond to the needs of the youth and the planet. By encouraging and disseminating a culture, methods and tools for empowerment, it transforms organisations. Ultimately, it leads communities and supports "Learning Planetizens" to take care of themselves, others and the planet.

To achieve these goals, the Institute promotes far-reaching collaborations to build a learning planet and develop new ways of learning and cooperating. It encourages the development of communities working together to find sustainable solutions in the education and health sectors and finding ways to reach the Sustainable Development Goals (SDGs) by 2030.

Our gift to the coming generations gives agency to youth by replacing traditional education with a personalized approach to learning.

Our goal is to enable them to learn to heal themselves, others, and the planet.

Our patrons and partners



2006

François Taddei and Ariel Lindner launch the Centre de Recherches Interdisciplinaires (CRI) to train scientists at the crossroads of life sciences, education, and digital tech to tackle multiple crises head-on.

The CRI then **doubles in size every eighteen months**: it starts out as a small-scale organisation and becomes an internationally renowned institute and a global community with several hundred partners across the world.

2021

In order to increase its impact and to respond to the global challenges identified by the Sustainable Development Goals, the CRI transforms into the Learning Planet Institute.

The Future

The ambition going forward is to co-create a learning society and respond to the global challenges identified by the Sustainable Development Goals.

The vision of a learning planet is to completely replace traditional education.

Traditional Education

Students are assigned a syllabus: it is out of the students' control what they are taught.

Students compete against one another for the top grade.

Studying is focused on what is known i.e. established facts and ways of working.

Students are measured against a 'one size fits all' standard.

Students enter school with the goal of gaining an education that will benefit themselves.

Courses are a set length, designed to be completed in a few years.

The Learning Planet Institute way:

Learners choose for what they will study.

Cooperation with one another is encouraged.

Learning is focused on unknowns: we work towards solving problems that don't yet have solutions

Grading is flexible and takes into account the context and circumstance of each individual.

The focus is on what we can learn to benefit others.

Learners gain tools, support systems and communities they can access throughout their lives.

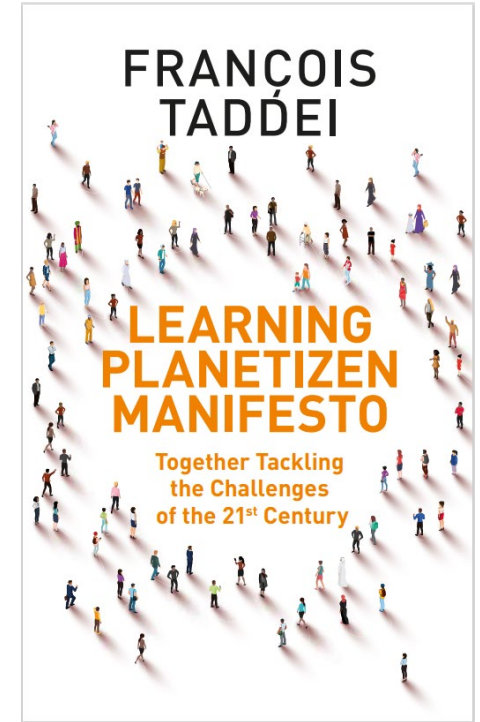
Learning Planetizen Manifesto

We were all taught to be good citizens but were never asked to reflect on the historical and geographical limitations of the idea of citizenship. Compared to suffering under tyranny, citizenship is clear progress that has enabled access to education, arts, science, open debate and democracy, but citizenship has always been an exclusive notion. City walls separated insiders from outsiders. Furthermore, of those living within the walls, only those able to defend the city commons from external threats were eligible for citizen status, i.e. no slaves, women, or children. Nature was also outside of the walls and had to be exploited to create sustenance for the citizen population and make them wealthier.

During the Enlightenment, nation states devised a new citizenship, yet it remained exclusive. Once more, foreigners, the poor, slaves, women, and children were not considered citizens and thus could not vote and decide on the laws imposed on them. Citizens of imperial states competed to exploit nature and colonize other parts of the world to maximize their wealth. This engendered the slavery, war, and overexploitation of natural resources that ushered in our current age of democratic, economic, health,

climate, and biodiversity crises, none of which stop at the walls of any city. If the citywide and statewide levels are the appropriate scales for coming to democratic decisions on local and national issues, then in order to solve borderless crises, a larger planetary scale is needed, thus in addition to being local citizens, we all need to learn to become ethical, inclusive, and respectful planetizens.

Planetizens of all ages are learning planetizens because we can always continue to learn to (i) care for themselves, others, and the planet, (ii) work together to overcome personal, local, and global challenges (including the UN's SDGs) by mobilizing collective intelligence and technologies that can help us to become more sustainable, (iii) recognize our global interdependence, the limits of our planet, the vulnerability of our societies, and the complexity of our world, (iv) reflect on our past, present, and future, (v) be good ancestors to the generations to come, (vi) “planetizen the movement,” in the words of Martin Luther King, Jr., as well as our thinking, actions, rights, institutions, celebrations, and ability to decide together how on Earth we’re going to live together.



[François Taddéi](#)

Co-founder and
President of the
Learning Planet
Institute.

Sustainable Campus

Our campus, reflects our ethos. Located in the 4th arrondissement in the heart of Paris, with a total surface area of 5,000 m², the Learning Planet Institute campus was inaugurated in October 2018. It has been constructed and restored thanks to the support of the Bettencourt Schueller Foundation and the City of Paris.

Since the Learning Planet Institute is determined to become a major actor in education, following the Sustainable Development Goals (SDGs), its building must operate along the same lines.

Taking care of the environment and the people who use the campus also translates into raising awareness about the challenges of the ecological and social transition among all stakeholders (students, professors, service providers, etc.), to make the campus as responsible and inclusive as possible.

The Learning Planet Institute campus was restored in 2018 according to the Paris Climate Plan ([Plan Climat Paris](#)), which defines building construction and design standards to limit greenhouse gas (GHG) emissions.

The energy, water and material resource consumption related to the Institute's activities, taking into account purchasing practices and externalities related to our operations (pollutant discharges and waste), are also continuously monitored. The objective is to study and question these consumptions according to our real needs and to identify solutions to move towards greater sobriety.

14%

reduction in electricity consumption since 2019

38%

reduction in heating consumption since 2019

Examples of the Learning Planet Institute's radically collaborative approach have already resulted in:

Recognising game changers

LPI has co-created with learners bachelor, master, executive and PhD programs to enable them to be recognised for their contributions to the needed changes.

A pioneering group of Youth Fellows

A network of young planetizens who have started their own transition related initiatives; we give voice to social entrepreneurs and co-construct with them.

Purpose exploration

Prototyped Ikigai, an AI powered app that enables students to define what is meaningful for them and the planet.

A worldwide, Learning Planet Alliance

Co-founded with UNESCO, with 300+ partners and more than 150 countries represented.

R&D for learning transitions

Built WeLearn, a tool that uses AI and state of the art technology to help people learn about planetary transitions. This is being contracted with the French government to scale it.

Thousands of SDG projects led by scientists and students

Created projects platforms in response to the United Nations' Sustainable Development Goals.

Shared learning across continents

Connecting and fostering ever more learning ecosystems in southern and northern countries, discovering how people learn and create even in the most adverse circumstances.

Co-construct a middle ground

We have a power to convene those with power and resources with those with passion and ideas.

The Learning Planet Institute: Now

Academic Programmes

The Education Hub at the Learning Planet Institute enables people to learn in alternative ways through disruptive education programmes, both inside and outside of academic institutions. This will allow us to contribute to building a learning society for a more sustainable world.



The Bachelor ACT (Bachelor's Degree In Sustainability Engagement)

Launched by CY Cergy Paris University and ESSEC, hosted by the Learning Planet Institute – with which it has a pedagogical partnership – this three-year course aims at training students so they can become professional project managers for ecological, civic and societal missions.



Frontiers of Life Sciences Bachelor's Degree

The Université Paris Cité's Frontiers of Life Sciences Bachelor's degree (Frontières du Vivant (FdV) Bachelor), hosted by the Learning Planet Institute, is an interdisciplinary Bac+3 programme which targets students with a passion for sciences and the world of research.



EURIP Graduate School

The École Universitaire de Recherche Interdisciplinaire de Paris – EURIP Graduate School, Université Paris Cité, combines fundamental and applied research in the service of the transitions of the 21st century in connection with the Sustainable Development Goals. Interdisciplinary, based on collaborative learning, pedagogical innovation and scientific research methods, it brings together the AIRE Master's degree and the FIRE doctoral school.



University degree in Innovative Scientific Mediation

This university degree delivered by Université Paris Cité aims at stimulating a critical reflection on the communication of science and technology, as well as on its role in participatory science, open science, and responsible research and innovation.



[Click here to play video.](#)



350

students per year; more than 50% of whom have international profiles

2 000

alumni since 2006

50

in-house researchers and more than 40 ongoing research projects

300

partner organisations in the International Alliance co-created in 2020 with UNESCO; 163 countries represented

2 500

children and 100 teachers involved, each year, in our youth projects, both in and out of school

1 370

unemployed people already supported by our inclusion projects

5 000

active users of our digital platforms

60 000

online participants in the 600 events of the LearningPlanet Festival 2023

The Learning Planet Institute: Now

Digital Ecosystems

Rethinking and facilitating learning through digital technology

The WeLearn Platform |

learningplanetinstitute.org/en/artificial-intelligence/

Designed and developed at the Learning Planet Institute, WeLearn is a digital platform (plugin and website) run by state-of-the-art artificial intelligence algorithms used to navigate learning resources.

Based on a text provided by the user, WeLearn offers relevant, high-quality resources (articles, videos, people, projects, skills...), allowing the user to discover information, acquire knowledge, and identify experts. WeLearn relies on selected sets of resources provided by partner organisations. WeLearn targets the educational resources needed to build the users' learning paths. The platform also provides the opportunity to join a learning community and be connected with mentors.

The tool is designed for individuals, schools, companies, organisations and institutions.

WeLearn is multilingual and can also offer quality resources selected by the Learning Planet Institute as a trusted third party. It works thanks to state-of-the-art artificial intelligence technology: transformers for high-dimensional text folding and Approximate Nearest Neighbours (ANN) search for recommendations.

The Learning Planet Institute is currently working with partner organisations to adapt WeLearn to their specific users and resources (e.g. education, businesses, communities).



[Click here to play video.](#)



WeLearn

Artificial Intelligence (AI)

WeLearn: a digital platform used to navigate learning resources.

50

in-house researchers

8

research teams

30

partner labs

40

current research projects (50% on learning sciences, 25% on collective intelligence and 38% on natural sciences)

The Learning Planet Institute: Now

The LearningPlanet Alliance | learning-planet.org

A worldwide community of game-changers

Created in 2019 by the Learning Planet Institute and UNESCO, the LearningPlanet Alliance invites all educational changemakers to come together, share experiences, and work towards common objectives. As a global movement for change, the Alliance mobilises diverse educational changemakers across the world – educators, policymakers, students, entrepreneurs – working together to drive real change.



A Global Movement for Change

We mobilise diverse educational changemakers across the world - educators, policymakers, students, entrepreneurs... - working together to drive real change.



Shared Goals

Transform lifelong learning systems to equip young generations and adults with the knowledge and skills needed to address complex challenges and thrive.



All Year Event Platform

The meeting space to organise events with your community, connect with other changemakers and stay up-to-date with the latest educational trends.



Action Groups

Innovative communities of practice bringing together Alliance partners around shared priorities: youth empowerment, greening education, local learning ecosystems, etc.



Media & News

Thought leaders, practitioners & youth are invited to share perspectives on learning and thriving in the 21st-Century, linking education to the challenges of our time.



LearningPlanet Festival

The annual rendez-vous to synchronise the world around the celebration of International Day of Education (24 January): 600+ online and onsite events in 2023!

The LearningPlanet Festival | learning-planet.org/festival-2023

An event platform for innovative and disruptive educators

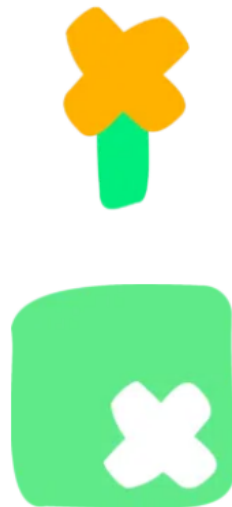
The LearningPlanet Festival is organised every year around International Education Day in partnership with UNESCO and hundreds of pioneering organisations in the fields of education, culture, science, social and environmental impact, as well as with thousands of students and young activists from all over the world. Hundreds of events, both local and online, provide opportunities to share ideas and current projects, to launch initiatives, to mobilise the forces that are committed to adapting our learning models to the accelerated transitions of the 21st century. With **over 600 events worldwide**, the 4th edition of the LearningPlanet Festival in January 2023 gathered **close to 20,000 attendees in person and over 60,000 online participants from 191 countries**. This is supplemented by thousands of participants taking part in a growing number of local events from Delhi to Phoenix through Paris, Dakar and Bogotá.

The Learning Planet Institute: The Future

The Learning Planet Institute are working on complementary next gen projects that aspire to advance human wisdom at the same rate as artificial intelligence, to heal the planet.

University for the Planet / Planetizen University

Learning Planet Institute is co-designing models for a Planetizen University enabled by joint efforts with partners such as UNESCO and the UN University; a new university with the first generations of citizens of the planet, for refugees and displaced peoples, recognizing those willing to heal themselves, others and the planet.



Vision

A world where education equips individuals to be lifelong learners committed to solving global challenges

Mission

To establish Planetizen University as the premier educational institution for cultivating ethical, inclusive, and respectful global citizens: Planetizens!

A key feature of the project is the ability to recognize the status of teachers and researchers from refugee and diaspora communities and enrol them in the university staff. This approach will enable the university to leverage the knowledge, skills, and experiences of these individuals to design and deliver courses that are relevant and responsive to the needs of the communities they serve.

The Learning Planet Institute: The Future

Other next generation projects and ambitions that the Institute is exploring include:

A global network of young researchers

A global network of young scientists mentored by experts to heal the planet and recognized for their contributions.

The Rebel Academy and startup studio

A school and distributed startup studio for misfits and mavericks, because true change needs a mindset-shift and resources.

A learning ecosystem for humanity

Crowd-sourced development & distribution of free, open source, online learning tools for humanity, to serve the planet's transition to a sustainable future.

State of the art digital tools to navigate knowledge

The Learning Planet Institute is also developing digital educational tool, such as:

A tool to use state of the art generative AI to boost self-assessment and opportunities exploration, to let learners start their reflexive journey with the ikigai framework.

LP GameXChange | An online platform for all game changers in the LP network to meet and exchange ideas, launch projects, etc. The LPF event platform already offers a strong basis that we are starting to adapt so that it is welcoming events throughout the year.

The digital tools that the Learning Planet Institute are developing have huge potential for educational impact and commercialisation.



Learning and collective intelligence

[Read more](#)



Frugal innovation

[Read more](#)



ELiS (Engaged Life Science)

[Read more](#)

The Role

Global Lead – Philanthropy & Planetary Stewardship



This is an incredibly exciting time for the Learning Planet Institute as it refines and clarifies its strategy and sets forward on the next phase of its organisational development.

To support these aims, a new role has been created to take a lead in developing fundraising and philanthropic relationships internationally.

It is envisioned that the post holder will build and develop a new team at the Institute focused entirely on international fundraising and development and take the organisation's mission to a new generation of philanthropists, funders, partners globally, forging deep relationships and transitioning supporters into stewards for the planetary future.

The Institute's leadership are open minded as to where candidates are based globally for this role and are seeking those who will be inspired by and aligned to the Institute's mission as well as those who bring the key skills, experience, approach and passion to the post.

Essential Functions

Global Lead – Philanthropy & Planetary Stewardship

Reporting to: François Taddei, President and CEO of the Learning Planet Institute, and;
Stephen Friend Head of the External Scientific Advisory Board (SAB)

Responsible for: International fundraising team.



Essential functions;

- Develop the strategic plan for the LPI's global philanthropy to build and diversify income in support of its goals;
- Establish and work closely with a group of advocates and influencers, to include members of the LPI's advisory board, to enhance and support the delivery of the strategy;
- Develop and implement a program of engagement and event activity to cultivate relationships with stakeholders;
- Represent the LPI nationally and internationally to key stakeholders in public, private and third sector;
- Convene and operationalize a global community of visible and well-known advocates for the LPI's mission to help build profile with philanthropists, organizations and potential partners and encourage wider engagement with LPI;
- Develop and implement a stakeholder communication and stewardship plan to ensure engagement and build awareness of LPI's impacts, partnerships, initiatives, and individuals to support the delivery of the philanthropic aims globally.

The Person

Global Lead – Philanthropy & Planetary Stewardship

- An alignment with the beliefs and mission of the Learning Planet Institute;
- The ability, approach and style to engage with and immerse in networks of both traditional and new generation philanthropy and stewardship;
- Ability to lead funding efforts from conception to delivery;
- Demonstrated capacity to work with an interdisciplinary team of storytelling and networking experts both within and outside of Learning Planet Institute;
- Ability to think creatively and innovatively around stakeholder engagement, and a willingness to fail, grounded by a reverence for irreverence;
- Ability to attract and mentor and lead an international-level funding team;
- Capacity to partner with relevant national and international partners in the public and private sectors;
- Knowledge of the mechanisms and regulations for international funding;
- A collegiate and collaborative, forward-thinking leadership style to work with colleagues at the Institute.

Your distinguishing characteristics:

You are **persuasive** and able to communicate mission, impact and opportunity to a variety of potential partners.

You are **a strategist and a storyteller** who has the ability to make complex issues feel attainable.

You are **an action-oriented professional** who builds trust with all levels of an organisation and with external stakeholders.

Your work is successfully accomplished through **collaboration**.

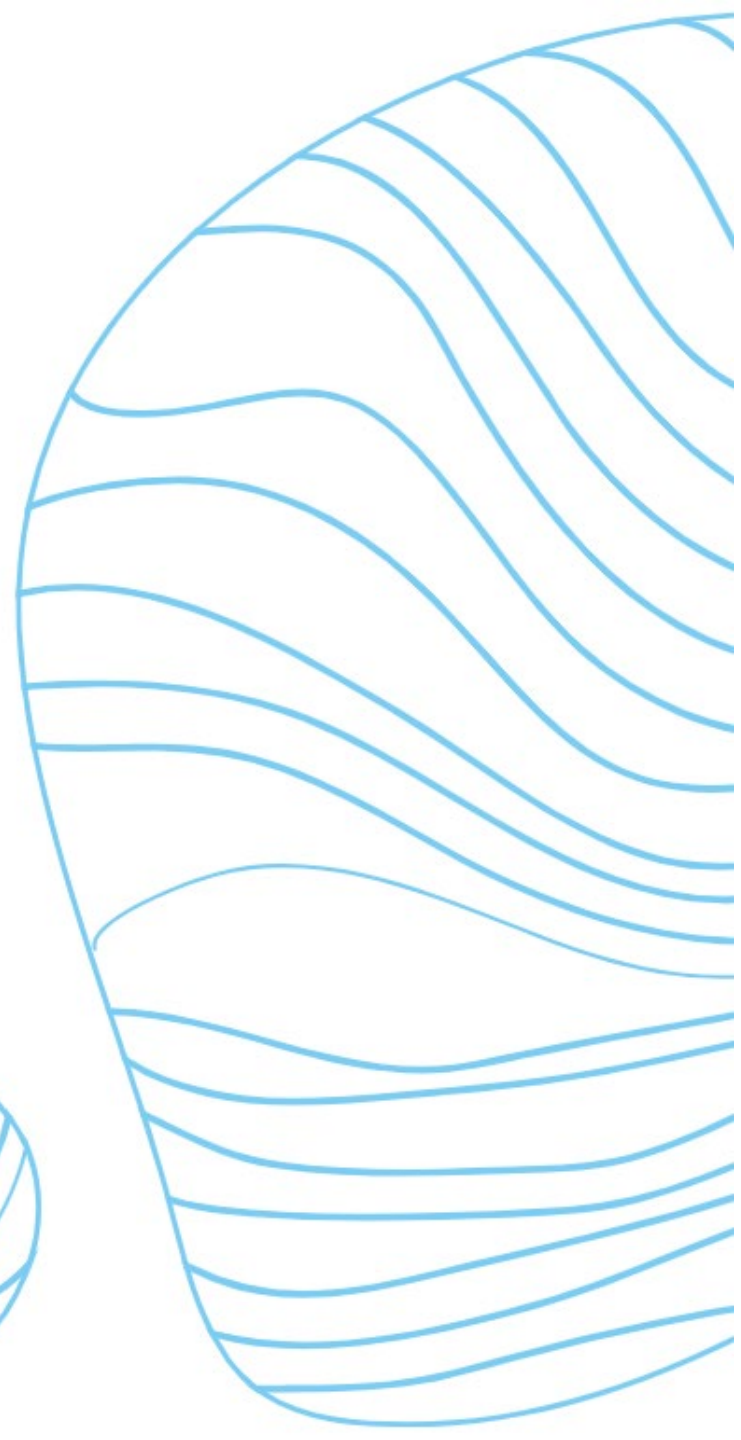
Terms of Appointment

Compensation & benefits:

Compensation will be commensurate with similar international positions, and experience will be taken into account.

Location:

Open, but likely based in the US with frequent time in Paris and travel as needed to other countries.



How to Apply

Saxton Bampfylde Ltd is acting as an employment agency advisor to the Learning Planet Institute on this appointment.

Candidates should apply for this role through our website at www.saxbam.com/appointments using code **EBKDA**.

Click on the 'apply' button and follow the instructions to upload a CV and cover letter and complete the online equal opportunities monitoring* form.

The Learning Planet Institute welcome alternative forms of application, such as video or audio applications. If you wish to discuss this, please email contact@saxbam.com.

The closing date for applications is noon on **Thursday 9th November 2023**.

** The equal opportunities monitoring online form will not be shared with anyone involved in assessing your application. Please complete as part of the application process.*

GDPR personal data notice

According to GDPR guidelines, we are only able to process your Sensitive Personal Data (racial or ethnic origin, political opinions, religious or philosophical beliefs, trade union membership, genetic data, biometric data, health, sex life, or sexual orientation) with your express consent. You will be asked to complete a consent form when you apply and please do not include any Sensitive Personal Data within your CV (although this can be included in your covering letter if you wish to do so), remembering also not to include contact details for referees without their prior agreement.



8 bis Rue Charles V
75004
Paris

learningplanetinstitute.org/en/

