



Baptism Development Zone - Appointment of:

Curator, Museum of Baptism

July 2025 Ref EBVIA

Saxton Bampfylde



Opening in 2030 to commemorate the 2000th anniversary of Jesus's baptism, the **Museum of Baptism**, located at the UNESCO World Heritage Site at Bethany Beyond the Jordan, will offer a profound visitor experience, weaving together immersive storytelling, spiritual reflection, and historical authenticity.



The Museum will sit within Bethany Beyond the Jordan, a thoughtfully planned sacred and cultural landscape of approximately 1,374 dunums. In keeping with the site's spiritual significance and natural character, only 30% of the land will be developed, with the remaining 70% preserved as green space—ensuring a harmonious integration of environment, indigenous architecture, and interpretation, as envisioned by the Baptism Development Zone. Within the developed area, a Pilgrims' Village will serve as a central hub, offering essential visitor services including accommodation, a theatre, restaurants, and retail spaces featuring authentic, locally made products. Designed to support both spiritual pilgrimage and cultural exchange, the BDZ aims to foster a welcoming, respectful, and engaging reflective experience for all.


Introducing the Museum of Baptism

The Museum of Baptism (MoB) is conceived as a central communication and interpretation component of the Baptism Development Zone (BDZ), a sacred area dedicated to the history and significance of baptism in the Christian faith, particularly as it relates to the baptism of Jesus Christ in the River Jordan. It will be located at the heart of the BDZ, which will also include a Pilgrims' Village—an integrated hospitality and cultural hub designed to support both spiritual pilgrimage and cultural exchange, with accommodation, performance spaces, and locally inspired dining and retail offerings.

The museum is being constructed at the location traditionally recognised as the site of Christ's baptism by John the Baptist. This site, located near the Jordan River, has been a pilgrimage destination for centuries and holds profound meaning for millions of Christians around the world. The Museum is being developed under the guidance of the Foundation for the Development of the Lands Adjacent to the Baptism Site, a public, non-profit entity established by law in the Hashemite Kingdom of Jordan.

Anticipated to open in 2030 to commemorate the 2000th anniversary of Jesus's baptism, the Museum will span 7,700 square meters and it is intended that visitors will explore the Museum prior to visiting the surrounding sites. The museum itself will seek to honour the heritage of the place while providing a space for education, reflection, and connection to the spiritual essence of baptism. The aim of the museum is to educate, inspire, and empower individuals and communities to deepen their understanding and appreciation of baptism in religious and spiritual traditions through sharing the story, history and significance of the Baptism of Jesus Christ.

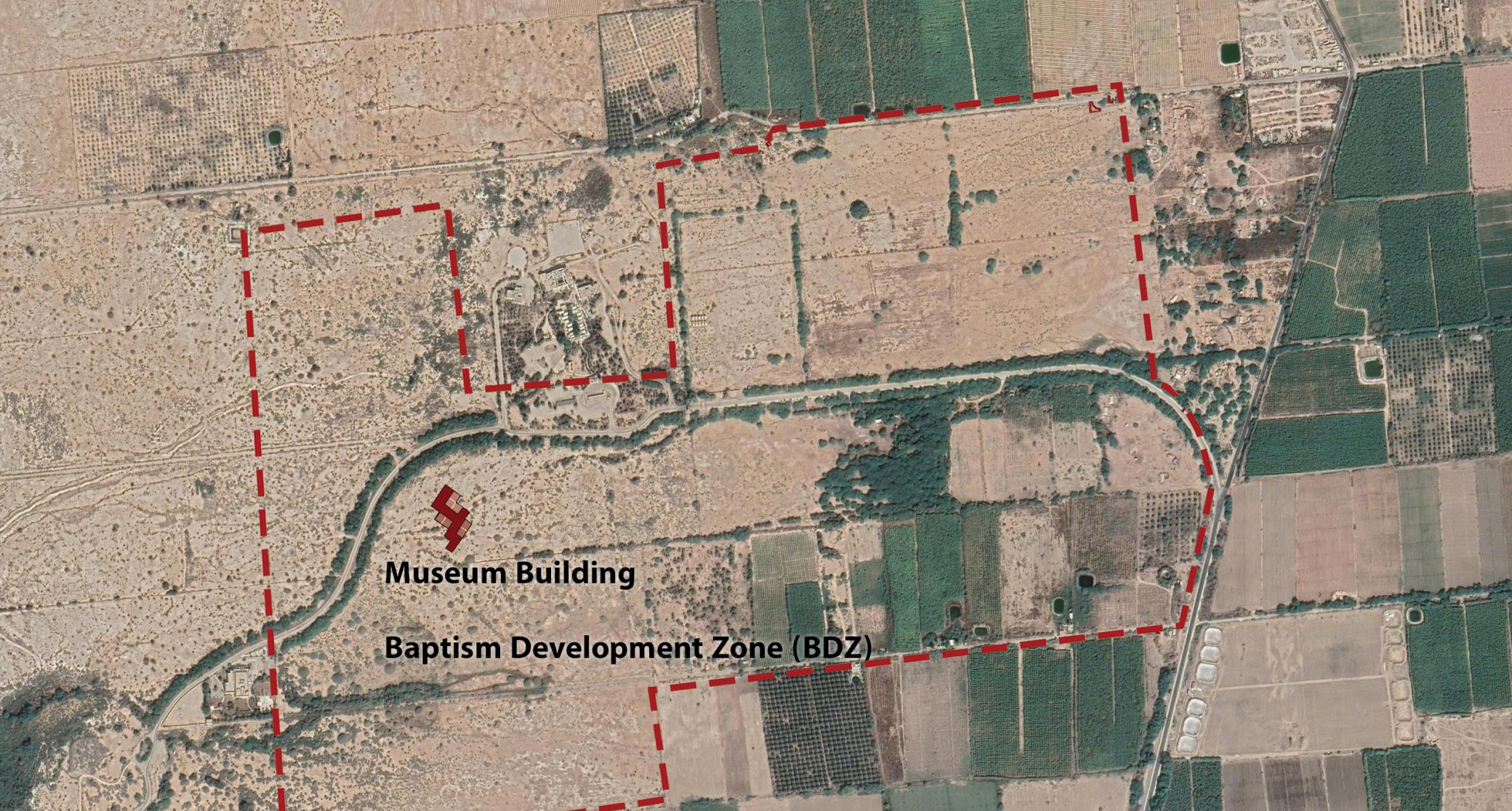
The adjacent site of Christ's baptism is recognised not only as a UNESCO World Heritage Site but also as a symbol of peace, hope, and spiritual renewal. It is a place where diverse faith traditions intersect, making it a unique opportunity to foster dialogue and understanding among different cultures and religions. The museum will serve as a hub for this dialogue, offering exhibitions that explore the meaning and significance of baptism across Christian traditions, the historical context of the events that occurred here, and the ongoing relevance of these themes in contemporary society.



At the heart of the BDZ, the Museum emphasizes three primary interpretive experiences:

- **Wilderness:** Historical and prophetic journey
- **Water:** Symbolism and ritual significance of baptism
- **Witness:** Spiritual transformation and personal testimony

The storyline will be designed to provide immersive, multi-sensory experiences and education, designed to inspire diverse global audiences—pilgrims, cultural tourists, and interfaith communities.



Museum Building

Baptism Development Zone (BDZ)

The Museum is currently in the design and development stage and is part of the first phase of the Baptism Development Zone's rollout. The impending appointment of Curator will help to shape the Museum from the ground up and ensure that its exhibitions and interpretive content are grounded in visitor-driven spiritual, historical, and archaeological context.



The Curator

The Museum Curator will strategically lead the development and implementation of interpretive exhibitions and collections management practices aligned closely with the museum's narrative framework and interpretive goals. The Curator will lead the stewardship, interpretation, and presentation of content related to the baptism of Jesus Christ and associated theological, archaeological, ecological, and cultural narratives. This includes overseeing the content integrity, curatorial strategy, research direction, exhibit relevance, and faith sensitivity of the Museum's permanent and temporary exhibitions.

The Curator will report initially to the Museum Committee and later to the Director of the Museum, once appointed. This is a foundational leadership role, focused on the planning and conceptual and curatorial integrity of the Museum in close collaboration with relevant stakeholders, architects, exhibit designers, theologians, archaeologists, and cultural historians

Key Responsibilities

Core Responsibilities:

Content Stewardship

- Ensure theological, historical, and archaeological accuracy across all exhibits and interpretive materials.
- Maintain the integrity of the Museum's "Big Idea".
- Coordinate with religious scholars, archaeologists, and historians to validate content.

Exhibit Development and Oversight

- Serve as the intellectual lead for storyline and exhibit content design.
- Guide exhibit narratives in alignment with the "Wilderness - Water - Witness" core story arc.
- Maintain immersive experiences by integrating meaningful sensory and technological elements.

Research & Collections

- Oversee acquisitions or loans of artifacts or digital assets.
- Ensure artifacts reflect spiritual relevance without denominational bias.
- Establish best-practice standards for artifact selection, care, conservation, and management.
- Build and oversee a reference archive of sacred texts, manuscripts, artifacts, and oral histories.
- Lead original research enhancing the museum's interpretive credibility.

Shared Responsibilities:

Audience Engagement & Accessibility

- Integrate immersive technologies to enrich visitor experience and expand digital accessibility.
- Ensure narratives resonate with diverse audiences.
- Champion inclusive interpretation avoiding proselytization.
- Collaborate with design teams for layered storytelling.

Institutional Collaboration

- Liaise with the selected architects, interpretive planners, exhibit designers, and stakeholders to develop the Museum from ground-up.
- Participate in content approval stages of the Interpretive Master Plan (IMP).
- Manage, mentor, and train curatorial staff and volunteers, fostering professional growth and institutional capacity.
- Support the development of educational partnerships and programming aligned with the Museum's mission.

Community and Stakeholder Relations

- Involve local communities in programming.
- Support training programmes for local curatorial capacity.
- Promote respectful communication of sacred themes.

Personal Requirements

The successful candidate will bring most or all of the following skills, experience, and attributes:

Knowledge and Experience

- Senior curatorial or interpretive experience within a museum or cultural institution, with significant responsibility for shaping content and exhibitions.
- Experience working on museum development projects, especially those in early or formative phases (e.g. pre-opening exhibitions, master planning, collection definition).
- Familiarity with or academic grounding in theology, religious studies, or history of Christianity, with an ability to work across denominations and with interfaith awareness.
- Knowledge of museology and museum ethics and standards, and an understanding of best practices in interpretive curation, including content validation, consultation with subject experts, and integration of archaeological, theological, and narrative material.
- A strong awareness of or experience working with archaeological collections, with the ability to assess relevance and provenance of potential acquisitions or loans.
- Experience in collection management, including basic artifact handling and stewardship practices.
- A track record of working collaboratively with design teams, content developers, and institutional partners to deliver public-facing exhibitions.
- Experience in the Middle East or comparable heritage environments is desirable.

Skills, Abilities and Personal Attributes

- Demonstrated ability to build a curatorial vision from the ground up, including helping to define collections, interpretive frameworks, and visitor experiences.
- A collaborative, diplomatic approach and a deep respect for the spiritual significance of the site and region.
- Strong interpersonal and intercultural skills, with the sensitivity and professionalism to engage constructively with religious scholars, government bodies, and community representatives.
- Confidence in validating content and shaping interpretation that is theologically accurate, non-denominational, and inclusive.
- Excellent written and verbal communication skills, with the ability to convey complex ideas clearly and appropriately for different audiences.
- Proven narrative interpretation skills, with the ability to craft meaningful, layered storytelling for diverse visitor groups.
- Capacity to manage competing priorities and timelines, while contributing to both strategic planning and practical implementation.
- Fluency in English is required; proficiency in Arabic or another regional language is desirable but not essential.



Terms of Appointment

Location: Jordan.

Salary: Given this is a new role, the Foundation envisages the salary for this role being around 70,000 JOD, with some potential upwards flexibility for a candidate with exceptional skills and experience.

A relocation package will also be discussed.



How to Apply

Saxton Bampfylde Ltd is acting as an employment agency advisor to the Baptism Development Zone on this appointment.

Candidates should apply for this role through our website at www.saxbam.com/appointments using code **EBVIA**

Click on the 'apply' button and follow the instructions to upload a CV and cover letter and complete the online equal opportunities monitoring* form.

The closing date for applications is noon on **Wednesday 6th August**.

* The equal opportunities monitoring online form will not be shared with anyone involved in assessing your application. Please complete as part of the application process.

GDPR personal data notice

According to GDPR guidelines, we are only able to process your Sensitive Personal Data (racial or ethnic origin, political opinions, religious or philosophical beliefs, trade union membership, genetic data, biometric data, health, sex life, or sexual orientation) with your express consent. You will be asked to complete a consent form when you apply and please do not include any Sensitive Personal Data within your CV (although this can be included in your covering letter if you wish to do so), remembering also not to include contact details for referees without their prior agreement.



Saxton Bampfylde